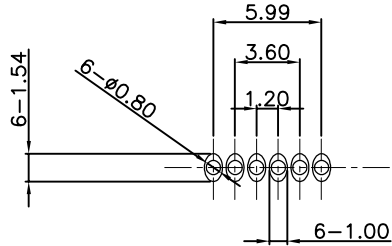
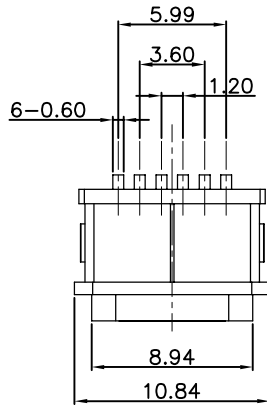
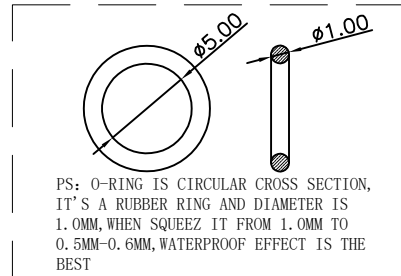
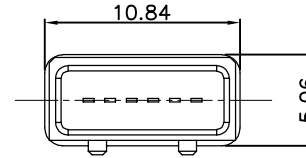
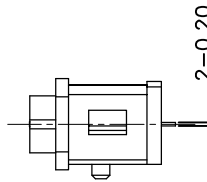
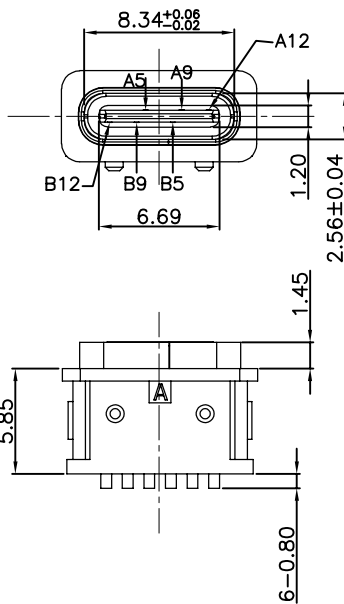


RoHS Compliant



Recommended P.C.B. Layout
Unspecified tolerance: ± 0.05
(Top view)



PS: O-RING IS CIRCULAR CROSS SECTION, IT'S A RUBBER RING AND DIAMETER IS 1.0MM, WHEN SQUEEZ IT FROM 1.0MM TO 0.5MM-0.6MM, WATERPROOF EFFECT IS THE BEST

A5	CC1	B12	GND
A9	VBUS	B9	VBUS
A12	GND	B5	CC2
PIN	SIGNAL NAME	PIN	SIGNAL NAME

REVISIONS			
REV.	DESCRIPTION	DATE	DESIGN

SPECIFICATION:

1. CURRENT RATING: 3.0A MAX
2. DIELECTRIC WITHSTAND VOLTAGE: 100VAC
3. TEMPERATURE RANGE: $-30^{\circ}\text{C} \sim 85^{\circ}\text{C}$
4. CONTACT RESISTANCE: 40 MILLIONHM MAX
5. INSULATION RESISTANCE: 100 MEGOHMS MIN.
6. INSERTION FORCE : 5N~20N
7. UNMATING FORCE: 8N~20N
8. DURABILITY:10,000 CYCLES
9. WATER PROOFNESS:THIS PRODUCT IS BASED ON IPX8.

4	Shell1	1	SUS301 Ni Plating T=0.25mm	Ni:40u"Min;
3	Housing2	1	PA10T(G.F30%)	
2	Contact	5	Phosphor bronze C5210R-EH Au/Ni Plating T=0.20mm	Ni:40u"Min; Au:CONTACT AREA:1u", OTHER AREA:G/F
1	Housing	1	PA10T (G.F30%)	
ITEM	PART NAME	Q' TY	FINISH	NOTE

PART NO. INFORMATION

U06-C F X X 5 X - W059			
PORT TYPE C: TYPE C	PACKAGE R:TAPE&REEL	HOUSING COLOR 2: WHITE 5: BLACK 9: NATURE	HOUSING MATERIAL A: LCP B: PBT C: PA9T D: PA6T E: PA46 F: PA66 G: PA10T
GENDER F: FEMALE M: MALE	CONTACT PLATED 1: GOLD FLASH 2: GOLD 3U" 3: GOLD 5U" 4: GOLD 10U" 5: GOLD 15U" 6: GOLD 30U"		

Bestcreate Technology Limited

TOLERANCES UNLESS OTHERWISE SPECIFIED:

.X	± 0.30	.X"	$\pm 2^{\circ}$
.XX	± 0.10	.X"	$\pm 1^{\circ}$
.XXX	± 0.05	.XX"	$\pm 0.5^{\circ}$

Website:www.bsc-elec.com

Email:bestcreate@bsc-elec.com

DESIGN:
I. L

DATE:

CHECKED:
C. W

DATE:

APPROVED:
C. W

DATE:

TITLE:

IPX8 Waterproof 6P Type CF Connector Vertical DIP

MATERILA:

PART NO:
U06-CFXX5X-W059

SIZE:
A4

FINSH:

DWG NO:
U06-CFXX5X-W059

REV:
A

UNIT
mm

SCALE
1=1

QUALITY
SYMBOLS

