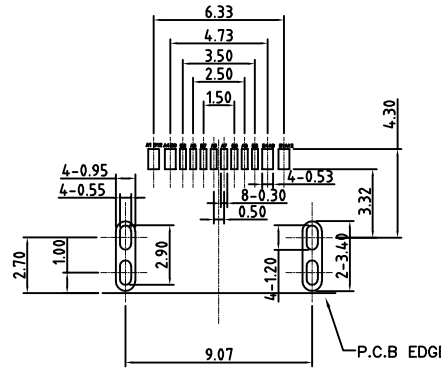
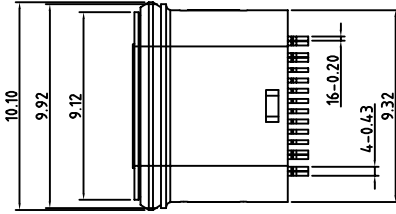
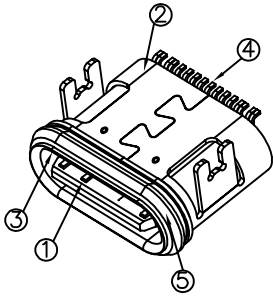


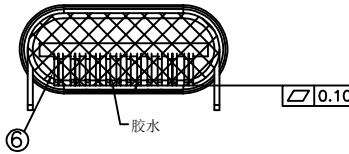
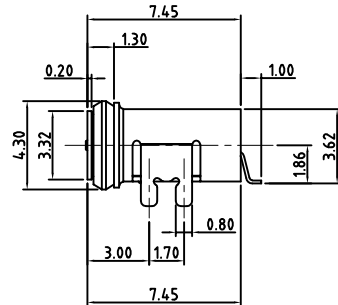
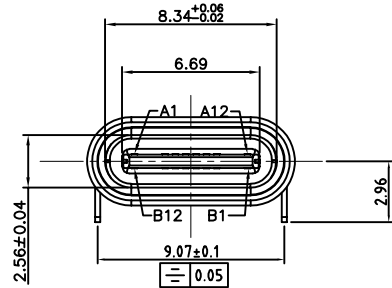
RoHS Compliant



RECOMMENDED PCB LAYOUT(TOP VIEW)

DEFAULT TOLERANCE:±0.05

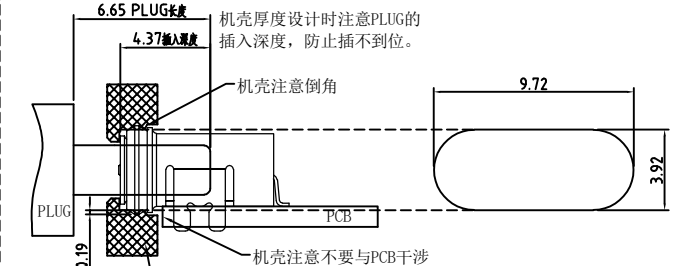
PCB板设计需修改LAYOUT时, 请知会厂商修改检验孔规



PART NO. INFORMATION

U06-C F X X 5 R - W185

- PORT TYPE: C: TYPE C
- GENDER: F: FEMALE, M: MALE
- CONTACT PLATED: 1: GOLD FLASH, 2: GOLD 3U", 3: GOLD 5U", 4: GOLD 10U", 5: GOLD 15U", 6: GOLD 30U"
- PACKAGE: R: TAPE REEL
- HOUSING COLOR: 2: WHITE, 5: BLACK, 9: NATURE
- HOUSING MATERIAL: A: LCP, B: PBT, C: PA9T, D: PA6T, E: PA10T, F: PA66, G: PA10T

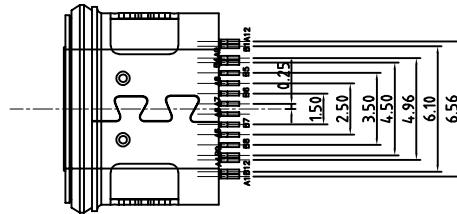


组装建议图

结构设计注意:
成品使用时, 如有洗面奶泡沫、牙膏、洗手液、脏污液体, 请在TYPE-C口外面再设计一层外壳, 保护TYPE-C母座与公头连接的金手指不会被脏污覆盖。

USB TYPE-C PIN ASSIGNMENTS

PIN NUMBER	SIGNAL NAME	PIN NUMBER	SIGNAL NAME
A1	GND	B12	GND
A4	VBUS	B9	VBUS
A5	CC1	B8	SBU2
A6	Dp1	B7	Dn2
A7	Dn1	B6	Dp2
A8	SBU1	B5	CC2
A9	VBUS	B4	VBUS
A12	GND	B1	GND



NO.	DESCRIPTION	MATERIAL	REMARKS	QTY
6	Epoxy	BLACK		
5	O RING	SILICA GEL	White	1PCS
4	CONTACT	C7025 Ni 50U" Au3U" Plating	AU On Contact Area And Solder Tail Area, All over Nickel Plated	16SET
3	SHELL	SUS316	Ni Plated	1PCS
2	SHELL	SUS304 1/2H	Ni Plated	1PCS
1	HOUSING	PA10T Vicnyl R630NH (G.F30%)	BLACK	1PCS

Bestcreate Technology Limited

TOLERANCES UNLESS OTHERWISE SPECIFIED:

.X	± 0.50	.X.	± 2'
.XX	± 0.30	.X'	± 1'
.XXX	± 0.20	.XX'	± 0.5'

Website:www.bsc-elec.com
Email:bestcreate@bsc-elec.com

DESIGN: I. L
DATE: 2018.7.7

CHECKED: C. W
DATE: 2018.7.7

APPROVED: C. W
DATE: 2018.7.7

TITLE: MID MOUNT IPX7 WATERPROOF 1.4MM USB C FEMALE 16P SMT TYPE

MATERIAL:	PART NO:	SIZE:
FINSH:	U06-CFXX5R-W185	A4
DWG NO:	U06-CFXX5R-W185	1 OF 1

REV:	UNIT	SCALE	QUALITY SYMBOLS
A	mm	1=1	