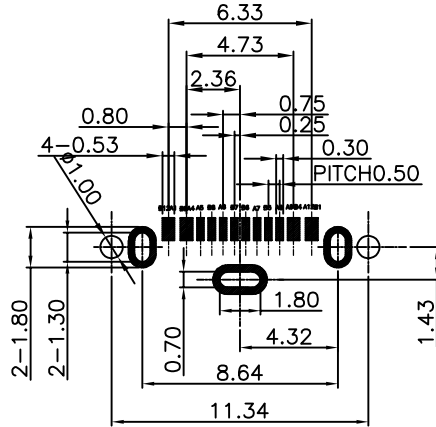
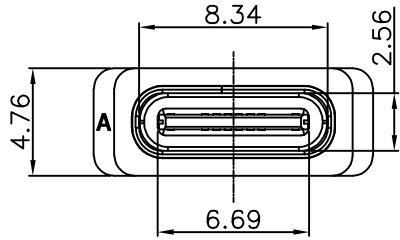


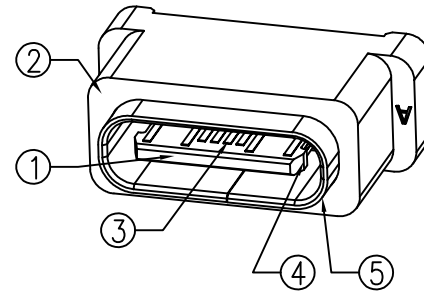
RoHS Compliant

REVISIONS			
REV.	DESCRIPTION	DATE	DESIGN



RECOMMENDED PCB LAYOUT(TOP VIEW)  
(GENERAL TOLERANCE±0.05)

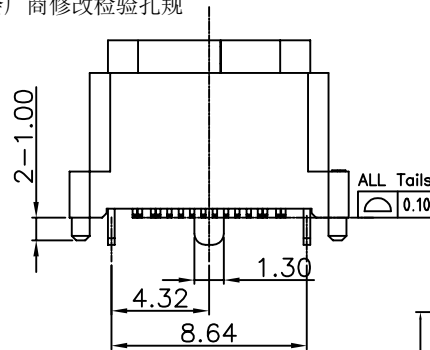
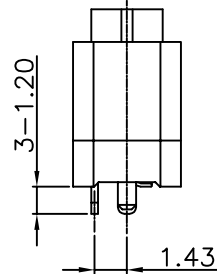
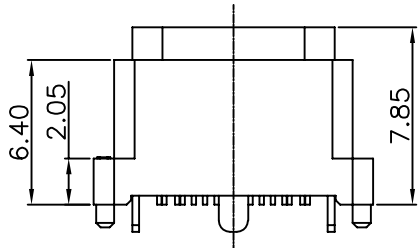
PCB板设计需修改LAYOUT时, 请知会厂商修改检验孔规



NOTES:

SPECIFICATION:

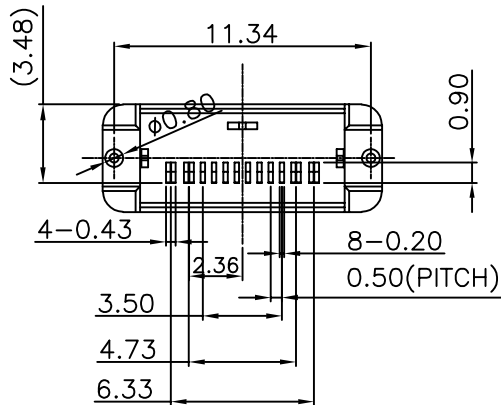
- CURRENT RATING: 3.0A MAX
- DIELECTRIC WITHSTAND VOLTAGE: 100VAC
- TEMPERATURE RANGE: -30 °C ~ 85 °C
- CONTACT RESISTANCE: 40 MILLIONHM MAX
- INSULATION RESISTANCE: 100 MEGOHMS MIN.
- INSERTION FORCE : 5N~20N
- UNMATING FORCE: 8N~20N
- DURABILITY:10,000 CYCLES
- DUSTPROOF AND WATERPROOF GRADE IP67.



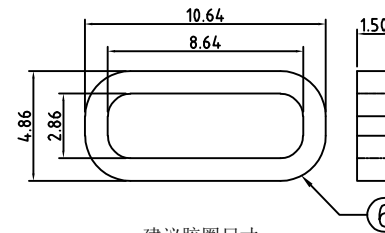
PART NO. INFORMATION

U06-C F X X 5 R - W186

- PORT TYPE: C: TYPE C
- GENDER: F: FEMALE, M: MALE
- CONTACT PLATED: 1: GOLD FLASH, 2: GOLD 3U", 3: GOLD 5U", 4: GOLD 10U", 5: GOLD 15U", 6: GOLD 30U"
- PACKAGE: R: TAPE REEL
- HOUSING COLOR: 2: WHITE, 5: BLACK, 9: NATURE
- HOUSING MATERIAL: A: LCP, B: PBT, C: PA9T, D: PA6T, E: PA46, F: PA66, G: PA10T



A1	GND	B12	GND
A4	VBUS	B9	VBUS
A5	CC1	B8	SBU2
A6	DP1	B7	DN2
A7	DN1	B6	DP2
A8	SBU1	B5	CC2
A9	VBUS	B4	VBUS
A12	GND	B1	GND
PIN	SIGNAL NAME	PIN	SIGNAL NAME



建议胶圈尺寸

NO.	DESCRIPTION	MATERIAL	REMARKS	QTY
7	Cap	HIGH TEMPERATURE PLASTIC	BLACK	1PCS
6	防水圈	硅胶	BLACK	1PCS
5	SHELL	STAINLESS STEEL	NI Plated	1PCS
4	SHIELDING PLATE	STAINLESS STEEL	NI Plated	1PCS
3	CONTACT	High Conductivity Copper	Au/Ni Plated	1SET
2	SHELL HOUSING	HIGH TEMPERATURE PLASTIC	BLACK	1PCS
1	HOUSING	HIGH TEMPERATURE PLASTIC	BLACK	1PCS

**Bestcreate Technology Limited**

TOLERANCES UNLESS OTHERWISE SPECIFIED:

.X	± 0.50	X.*	± 2'
.XX	± 0.30	.X*	± 1'
.XXX	± 0.20	.XX*	± 0.5'

Website:www.bsc-elec.com  
Email:bestcreate@bsc-elec.com

DESIGN: I. L  
DATE: 2018.7.7

CHECKED: C. W  
DATE: 2018.7.7

APPROVED: C. W  
DATE: 2018.7.7

TITLE: IPX8 Waterproof USB  
Type C 2.0 16P Vertical SMT Type

MATERIAL: U06-CFXX5R-W186  
PART NO: U06-CFXX5R-W186  
SIZE: A4

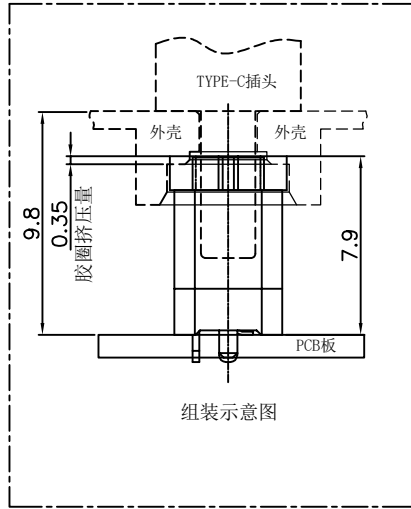
FINISH: U06-CFXX5R-W186  
DWG NO: U06-CFXX5R-W186  
1 OF 3

REV: A  
UNIT: mm  
SCALE: 1=1  
QUALITY SYMBOLS: [Symbol]

RoHS Compliant

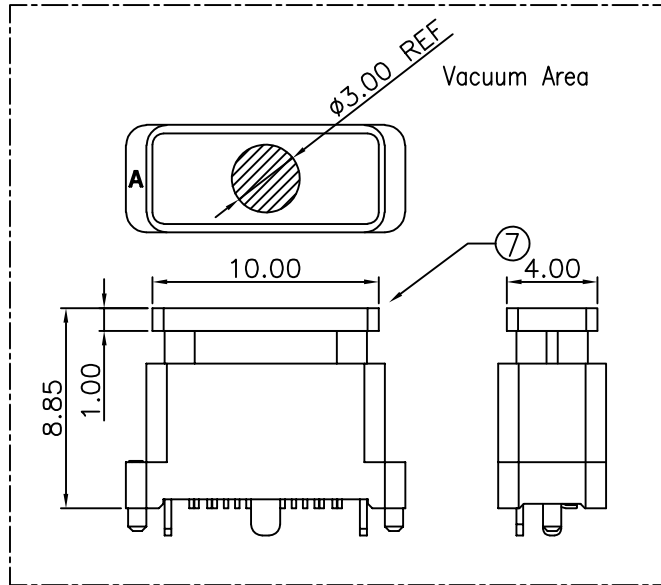
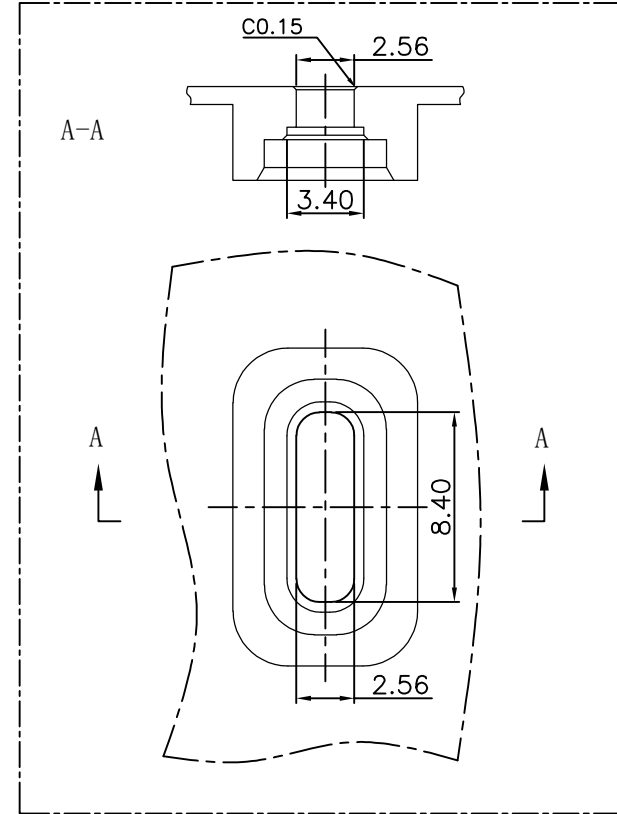
REVISIONS			
REV.	DESCRIPTION	DATE	DESIGN

组装示意图



结构设计注意：  
成品使用时，如有洗面奶泡沫、牙膏、洗手液、脏污液体，请在TYPE-C口外面再设计一层外壳，保护TYPE-C母座与公头连接的金手指不会被脏污覆盖。

外壳参考设计图



**Bestcreate Technology Limited**

TOLERANCES UNLESS OTHERWISE SPECIFIED:

.X	± 0.50	.X"	± 2"
.XX	± 0.30	.X'	± 1'
.XXX	± 0.20	.XX'	± 0.5'

DESIGN: I. L  
DATE: 2018. 7. 7

CHECKED: C. W  
DATE: 2018. 7. 7

APPROVED: C. W  
DATE: 2018. 7. 7

TITLE: IPX8 Waterproof USB  
Type C 2.0 16P Vertical SMT Type

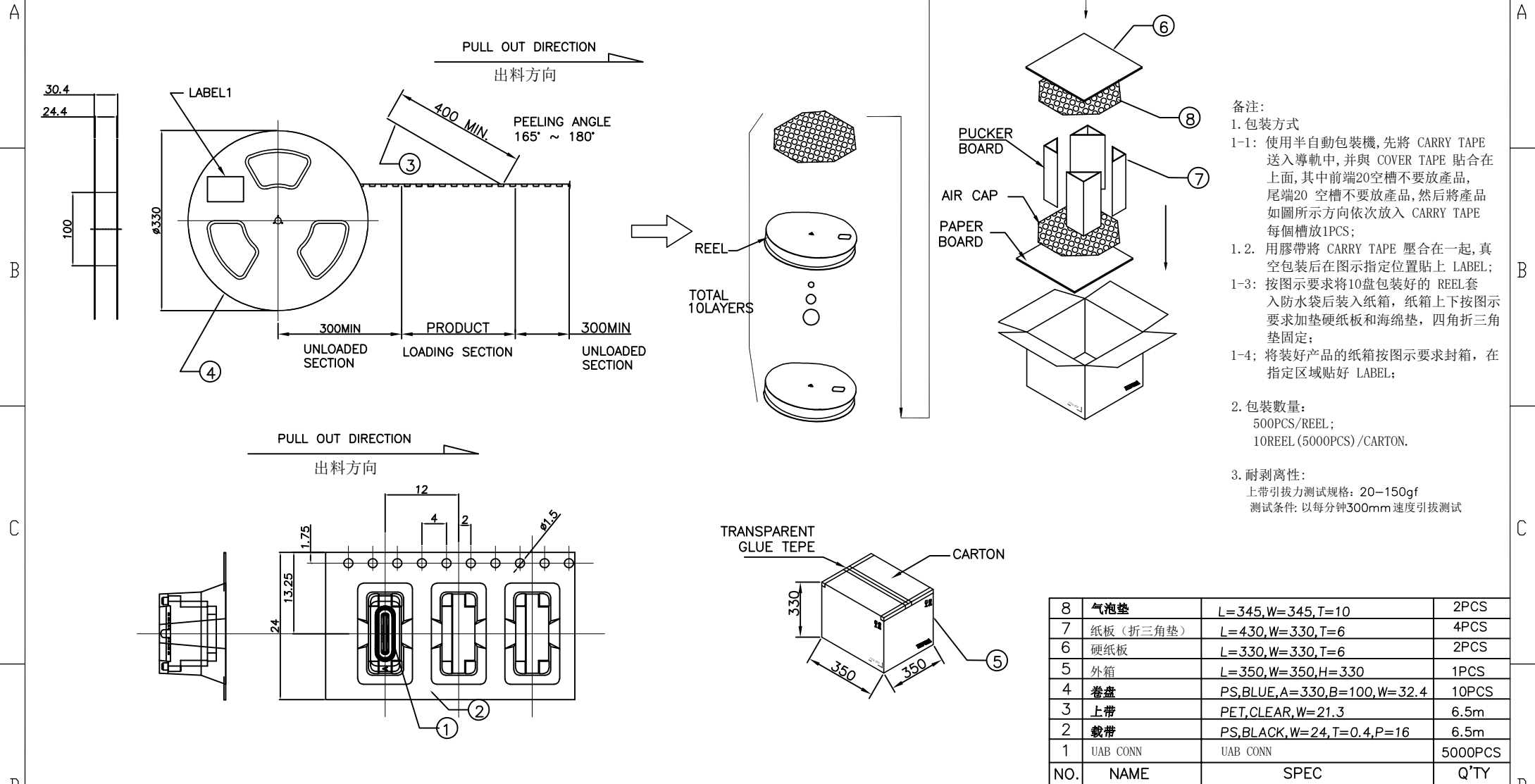
MATERIAL:	PART NO: U06-CFXX5R-W186	SIZE: A4
FINISH:	DWG NO: U06-CFXX5R-W186	2 OF 3

REV: A	UNIT: mm	SCALE: 1=1	QUALITY SYMBOLS:
--------	----------	------------	------------------

Website: www.bsc-elec.com  
Email: bestcreate@bsc-elec.com

RoHS Compliant

REVISIONS			
REV.	DESCRIPTION	DATE	DESIGN



**Bestcreate Technology Limited**

TOLERANCES UNLESS OTHERWISE SPECIFIED:

.X	± 0.50	.X'	± 2'
.XX	± 0.30	.X''	± 1'
.XXX	± 0.20	.XX'	± 0.5'

Website: www.bsc-elec.com  
Email: bestcreate@bsc-elec.com

DESIGN: I. L  
DATE: 2018. 7. 7

CHECKED: C. W  
DATE: 2018. 7. 7

APPROVED: C. W  
DATE: 2018. 7. 7

TITLE: IPX8 Waterproof USB  
Type C 2.0 16P Vertical SMT Type

MATERIAL:	PART NO: U06-CFXX5R-W186	SIZE: A4
FINISH:	DWG NO: U06-CFXX5R-W186	3 OF 3

REV: A	UNIT mm	SCALE 1=1	QUALITY SYMBOLS
--------	---------	-----------	-----------------