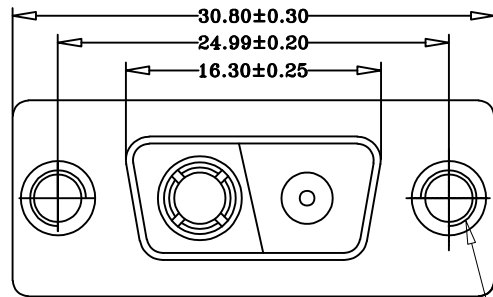
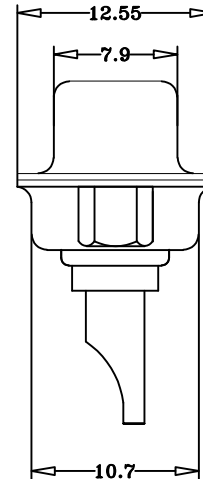
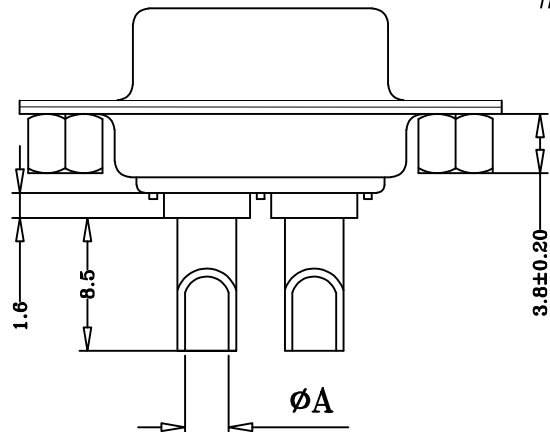


RoHS Compliant

REVISIONS			
REV.	DESCRIPTION	DATE	DESIGN



#4-40unc*2



一、 MATERIAL:

1. Insulator: PBT+30%GLASS FIBER(UL94V-0)
2. CONTRACT: COPPER ALLOY, 30U”(0.76UM) GOLD PLATED OVER 50”(1.27MM) NICKEL
3. THREADED INSERT-STEEL, MATTE TIN PLATED, JACK SOCKET-COPPER ALLOY, NICKEL PLATED
4. Shell: STEEL, NICKEL PLATED

二、 SPECIFICATION:

1. CURRENT RATING: 40 AMP
2. INSULATION RESISTANCE: 5000MΩ MIN. At 500VDC
3. DIELECTRIC STRENGTH: 1500V DC
4. OPERATION TEMPERATURE: -55° C~+105° C.
5. CONTACT RESISTANCE: 5 MILLIOHMS MAX
6. VOLTAGE RATING: 200V DC
7. CAPACITANCE: 47,000pF+20%

Current Rating	Dimension
	Ø A
40 AMPS	Ø4.60
30 AMPS	Ø3.20
20 AMPS	Ø2.8
10 AMPS	Ø1.7

Bestcreate Technology Limited

TOLERANCES UNLESS OTHERWISE SPECIFIED:

.X	± 0.38	.X'	± 3'
.X	± 0.35	.X'	± 2'
.XX	± 0.25	.XX'	± 1'

Website: www.bsc-elec.com
Email: bestcreate@bsc-elec.com

DESIGN: I. L DATE: 2025.04.16

CHECKED: C. W DATE: 2025.04.16

APPROVED: C. W DATE: 2025.04.16

TITLE: D-SUB 2V2 HIGH CURRENT FEMALE CONNECTOR FOR WIRE SOLDERING

MATERILA: PART NO: DBF-2V2-001-30U SIZE: A4

FINSH: DWG NO: DBF-2V2-001-30U

REV: A UNIT: mm SCALE: 1=1 QUALITY SYMBOLS: