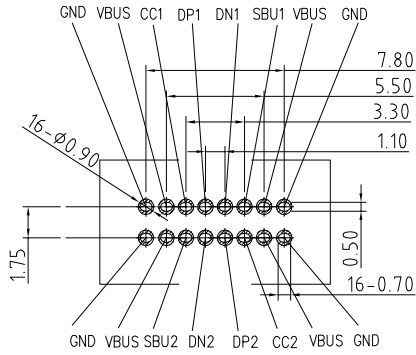
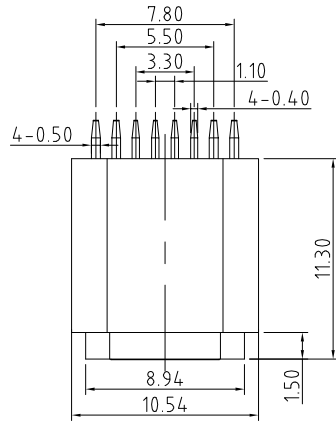


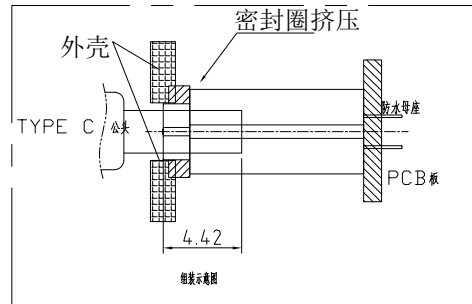
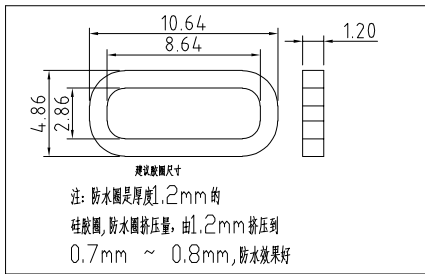
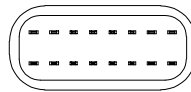
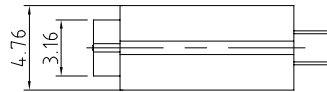
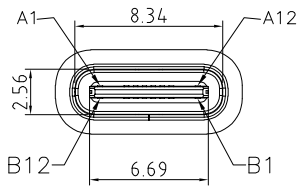
RoHS Compliant



Recommended P.C.B. Layout  
Unspecified tolerance: ±0.05  
(Top view)

RECOMMENDED PCB LAYOUT(TOP VIEW)

THICKNESS T=1.0mm  
DEFAULT TOLERANCE+/-0.05



REVISIONS			
REV.	DESCRIPTION	DATE	DESIGN

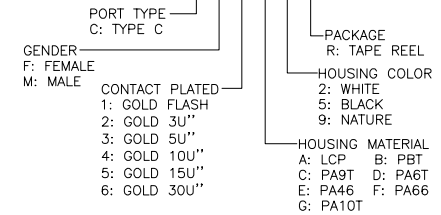
NOTES:

SPECIFICATION:

- CURRENT RATING: 5.0A MAX
- DIELECTRIC WITHSTAND VOLTAGE: 100VAC
- TEMPERATURE RANGE: -30 °C ~ 85 °C
- CONTACT RESISTANCE: 40 MILLIONHM MAX
- INSULATION RESISTANCE: 100 MEGOHMS MIN.
- INSERTION FORCE : 5N~20N
- UNMATING FORCE: 8N~20N
- DURABILITY:5000 CYCLES

PART NO. INFORMATION

**U06-C F X X 5 R - W182**



INTERFACE(FRONT VIEW)

A1	A2	A3	A4	A5	A6	A7	A8	A9	A10	A11	A12
GND			VBUS	CC1	DP1	DN1	SBU1	VBUS			GND
GND			VBUS	SBU2	DN2	DP2	CC2	VBUS			GND
B12	B11	B10	B9	B8	B7	B6	B5	B4	B3	B2	B1

ITEM	PARTNAME	Q'TY	FINISH	NOTE
4	Shell1	1	SUS304 Ni Plating T=0.3mm	Ni-40-120u'
3	Housing2	1	LCP(G.F30%)	
2	Contact	4	Phosphor bronze C7025 Au/Ni Plating T=0.15mm	Ni-40-160u' AuCONTACT AREA:3u'
1	Housing	1	PA9T (G.F30%)	

**Bestcreate Technology Limited**

TOLERANCES UNLESS OTHERWISE SPECIFIED:

X.	± 0.30	X.'	± 2'
.XX	± 0.10	.X'	± 1'
.XXX	± 0.05	.XX'	± 0.5'

Website:www.bsc-elec.com  
Email:bestcreate@bsc-elec.com

DESIGN: I.L  
DATE: 2018.7.7

CHECKED: C.W  
DATE: 2018.7.7

APPROVED: C.W  
DATE: 2018.7.7

TITLE:  
**IPX8 16P WATERPROOF USB C FEMALE CONNECTOR VERTICAL DIP,H11.3**

MATERILA: PART NO: U06-CFXX5R-W182 SIZE: A4

FINSH: DWG NO: U06-CFXX5R-W182 1 OF 1

REV: A UNIT mm SCALE 1=1 QUALITY SYMBOLS