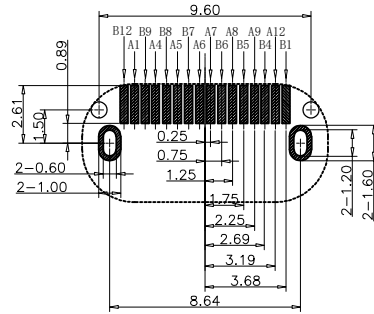
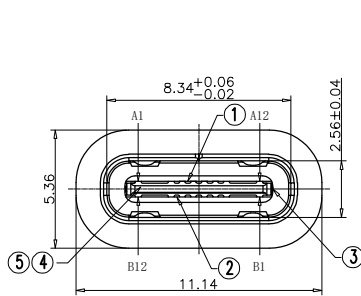


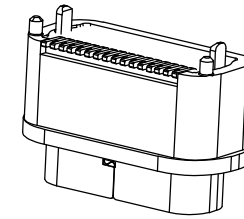
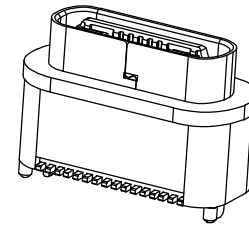
RoHS Compliant



REVISIONS			
REV.	DESCRIPTION	DATE	DESIGN



RECOMMEND P.C.B LAYOUT (COMPONENT SIDE)
TOLERANCE FOR PCB LAYOUT IS ±0.05



NOTES:

- ELECTRICAL CHARACTERISTICS
- LOW LEVEL CONTACT RESISTANCE:
40m ohm MAX FOR ALL CONTACT
50m ohm MAX AFTER ENMRINMENT TEST
- DIELECTRIC WITHSTANDING VOLTAGE
100 VAC FOR 1 MINUTE SEA LEVEL
- INSULATION RESISTANCE
100meg ohm MIN
- CURRENT RATING
VBUS AND GND CONTACTS RATED AT 2.5A
EA. PARALLELED FOR A TOTAL OF 6A
- MECHANICAL CHARACTERISTICS:
 - INSERTION FORCE: 20N MAX
 - EXTRACTION FORCE 1-1000CYCES 8N MN.20 N MAX
EXTRACTION FORCE 1001-10000 cYaES 6N MIN. 20 N MAX
 - DURABILITY :10,000craES
 - OPERATING TEMPERATURE:-55°C TO +85°C

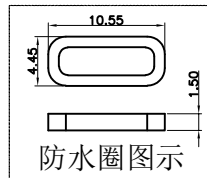
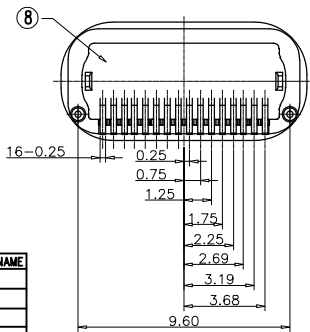
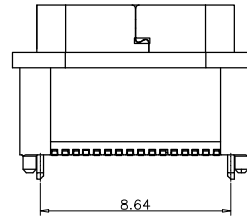
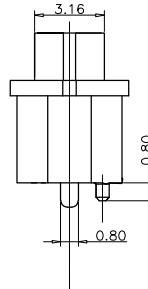
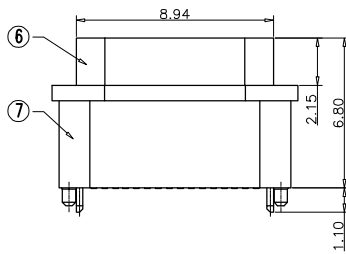


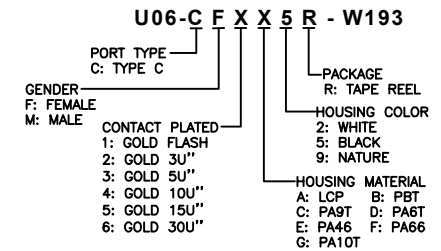
TABLE:

NO	PART	Q'TY	Material
1	TOP TERMINAL	8	COPPER ALLOY/Au PLATED
2	BOTTOM TERMINAL	8	COPPER ALLOY/Au PLATED
3	MID PLATE	1	STAINLESS STEEL 清洗
4	MOLDING 1	1	THERMOPLASTIC PLASTICS
5	MOLDING 2	1	THERMOPLASTIC PLASTICS
6	SHELL	1	STAINLESS STEEL IS NICKEL-PLATED
7	HOUSING	1	THERMOPLASTIC PLASTICS
8	WATERPROOF GLUE	1	EPOXY RESIN

USB TYPE C PIN ASSIGNMENTS

PIN NUMBER	SIGNAL NAME	PIN NUMBER	SIGNAL NAME
A1	GND	B12	GND
A4	VBUS	B9	VBUS
A5	CC1	B8	SBU2
A6	DP1	B7	DN2
A7	DN1	B6	DP2
A8	SBU1	B5	CC2
A9	VBUS	B4	VBUS
A12	GND	B1	GND

PART NO. INFORMATION



Bestcreate Technology Limited

TOLERANCES UNLESS OTHERWISE SPECIFIED:

X.	± 0.35	X.'	± 4'
.X	± 0.30	.X''	± 3'
.XX	± 0.25	.XX''	± 2'

Website: www.bsc-elec.com
Email: bestcreate@bsc-elec.com

DESIGN: I. L
DATE: 2018. 7. 7

CHECKED: C. W
DATE: 2018. 7. 7

APPROVED: C. W
DATE: 2018. 7. 7

TITLE: IP68 16P WATERPROOF USB C FEMALE CONNECTOR VERTICAL SMT,H6.8MM

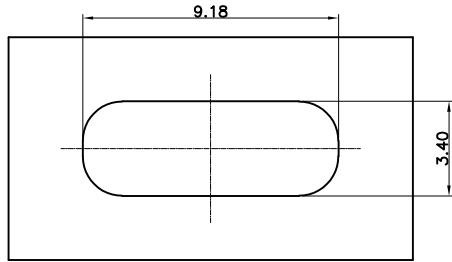
MATERILA:	PART NO:	SIZE:
FINSH:	U06-CFXX5R-W193	A4
	DWG NO: U06-CFXX5R-W193	1 OF 3

REV: A
UNIT: mm
SCALE: 1=1
QUALITY SYMBOLS:

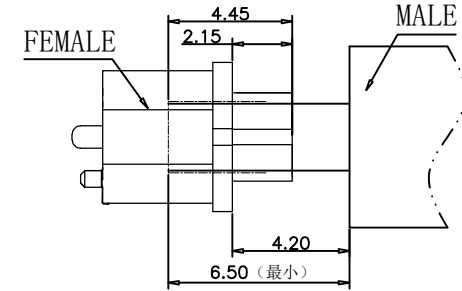
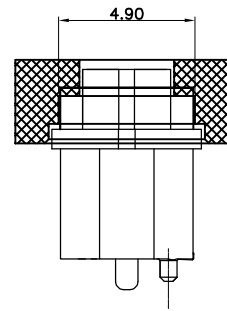
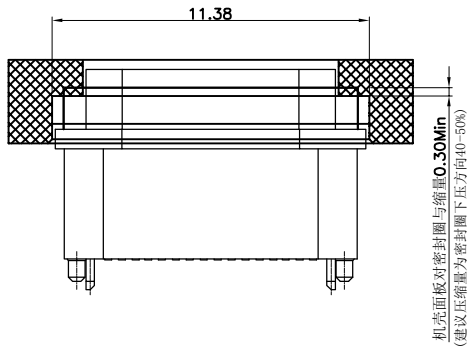
RoHS Compliant



REVISIONS			
REV.	DESCRIPTION	DATE	DESIGN



密封开孔参考尺寸(只供参考)
 组装外壳时需要打环保润滑油



Bestcreate Technology Limited

TOLERANCES UNLESS OTHERWISE SPECIFIED:

X.	± 0.35	X.'	± 4'
.X	± 0.30	.X'	± 3'
.XX	± 0.25	.XX'	± 2'

Website: www.bsc-elec.com
 Email: bestcreate@bsc-elec.com

DESIGN: I. L
 DATE: 2018. 7. 7

CHECKED: C. W
 DATE: 2018. 7. 7

APPROVED: C. W
 DATE: 2018. 7. 7

TITLE: IP68 16P WATERPROOF USB C FEMALE CONNECTOR VERTICAL SMT,H6.8MM

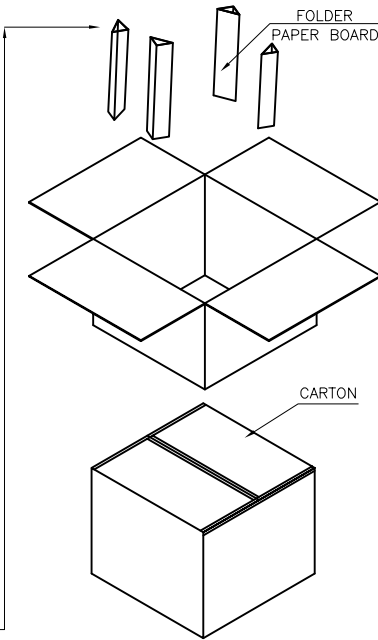
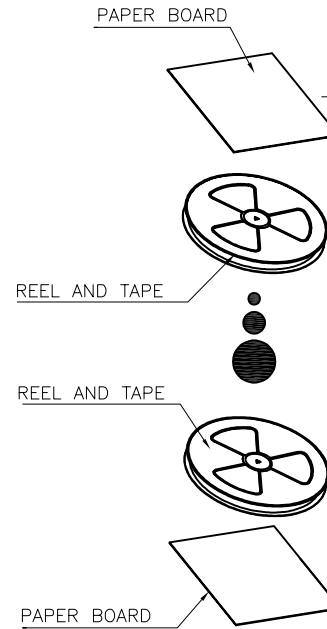
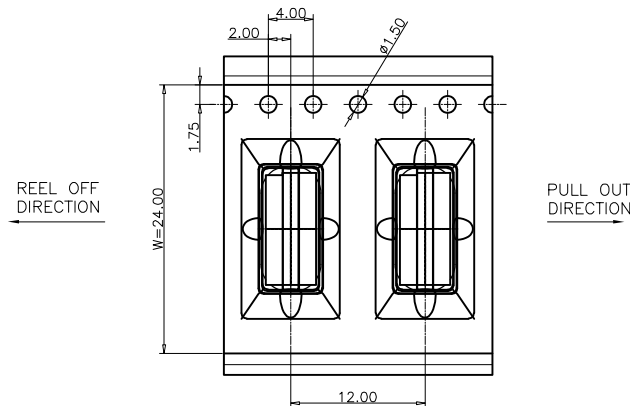
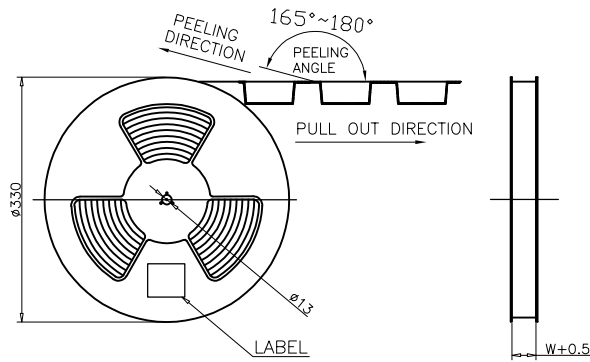
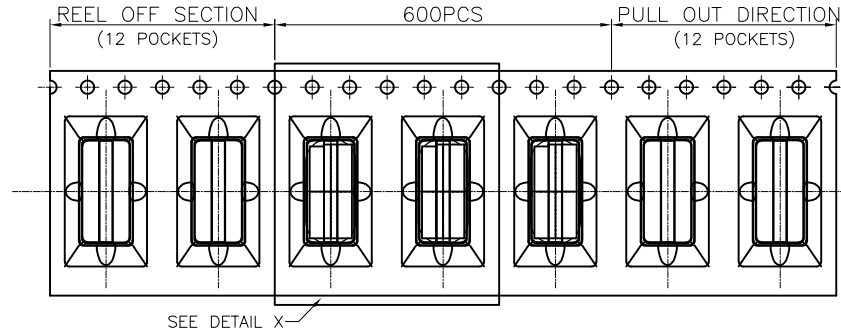
MATERILA: U06-CFXX5R-W193
 PART NO: U06-CFXX5R-W193
 SIZE: A4

FINSH: U06-CFXX5R-W193
 DWG NO: U06-CFXX5R-W193
 2 OF 3

REV: A
 UNIT: mm
 SCALE: 1=1
 QUALITY SYMBOLS

RoHS Compliant

REVISIONS			
REV.	DESCRIPTION	DATE	DESIGN



	REEL	CARTON
CONNECTOR (PCS)	600	6000

Bestcreate Technology Limited

TOLERANCES UNLESS OTHERWISE SPECIFIED:

X.	± 0.35	X.*	± 4'
.X	± 0.30	.X*	± 3'
.XX	± 0.25	.XX*	± 2'

Website: www.bsc-elec.com
 Email: bestcreate@bsc-elec.com

DESIGN: I. L
 DATE: 2018. 7. 7

CHECKED: C. W
 DATE: 2018. 7. 7

APPROVED: C. W
 DATE: 2018. 7. 7

TITLE: IP68 16P WATERPROOF USB C FEMALE CONNECTOR VERTICAL SMT,H6.8MM

MATERILA: U06-CFXX5R-W193
 PART NO: U06-CFXX5R-W193
 SIZE: A4

FINSH: U06-CFXX5R-W193
 DWG NO: U06-CFXX5R-W193
 2 OF 3

REV: A	UNIT: mm	SCALE: 1=1	QUALITY SYMBOLS:
--------	----------	------------	------------------